

ALL FOR SCAN

Twain Interface Version

User Manual

Version 2.0A00

Luccarelli Srl

1. What's ALL FOR SCAN?

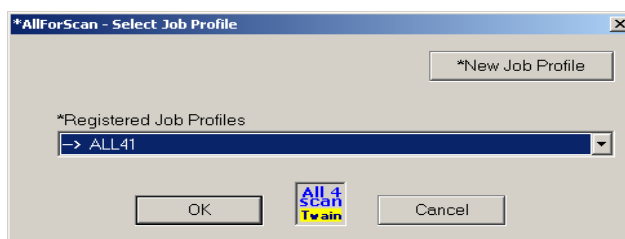
"All For Scan" is a scan station software, for scanners with either a twain or Kofax interface.

All For Scan enables you to:

- produce Tiff, Multi-Tiff and jpg images from your documents
- define a structure of up to 9 levels of subfolders during the scanning process
- scan the front and back of documents or front only
- divide your documents into batches
- export completed batches to a network image server
- store several separate job profiles

2. Starting All For Scan

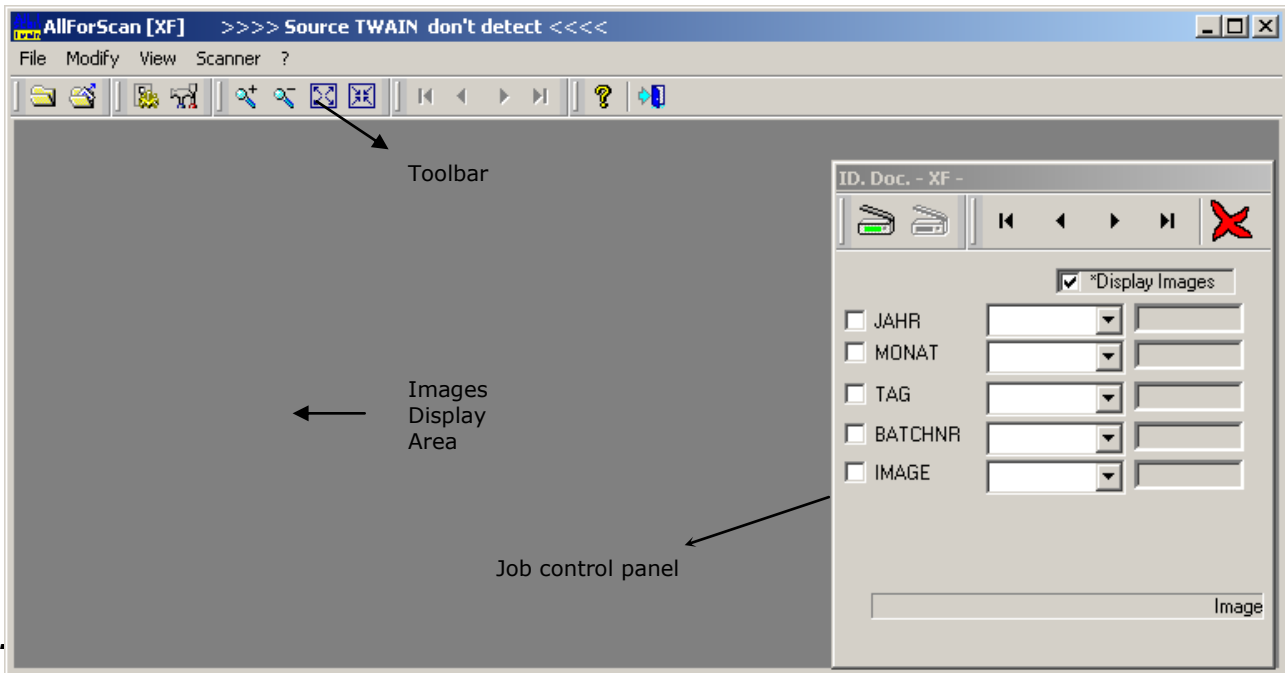
When you start the program, "All For Scan" shows you the job selection window, as represented in the underlying figure, from here you can select a stored job profile, or create a new one.



2.1 Buttons and field descriptions

Element	Description
New Job Profile	With this key you can start to create a new job. (See also "How to Create a new Job")
Registered Jobs Prof.	List of stored Job Profiles.
Ok	Starts the selected Job profile.
Cancel	Cancels program execution

3. All for Scan main window.



3.

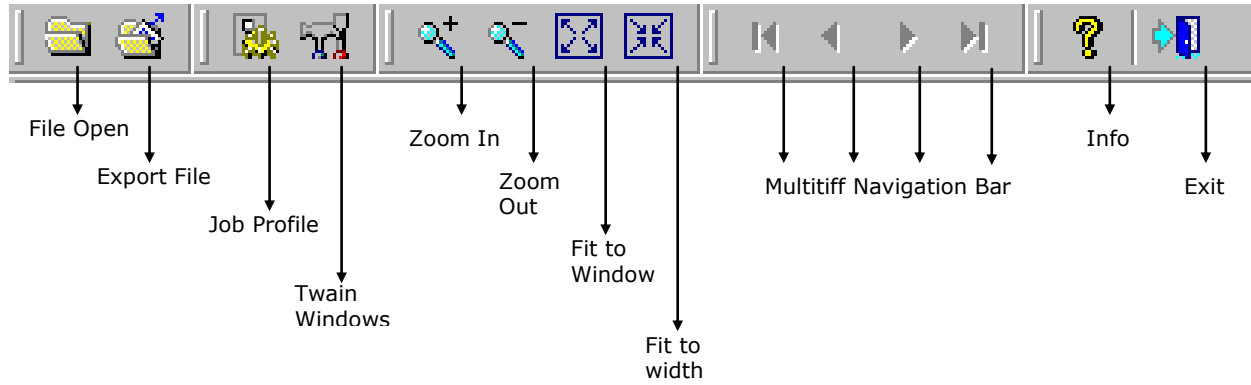
Object	Description
Toolbar	A system Toolbar that access all program functions
Images Display Area	Allows you to optionally display the images during scanning
Job Control Panel	Starts or to stops the scanning process and allows user to type the value for each level (subfolder)

3.2 Menu Descripton

Menu Items			Description	
File	Open		Opens an Image file	
	Export To		Opens the dialog windows to Export images	
	Close		Closes All for Scan program	
Modify	Job	Scanner Parameter	Open the dialog windows to modify the parameters of opened job	
View	Fit to Window		Expands the whole image	
	Fit to Width		Expands the image to the maximum width on the Blackboard	
	Zoom 25%		Display image at 25% of original size	
	Zoom 50%		Display image at 50% of original size	
	Zoom 100%		Display image at 100% of original size	
Scanner	Zoom 200%		Display image at 200% of original size	
	Select the twain source		Allows user to select from available TWAIN sources	
	Setup		Calls the standard twain dialog to set the scanner parameters	
	Advanced Setup	Rotate	0	Rotate image 0 degree after scanning
			90	Rotate image 90 degrees after scanning
180			Rotate image 180 degrees after scanning	
270			Rotate image 270 degrees after scanning	

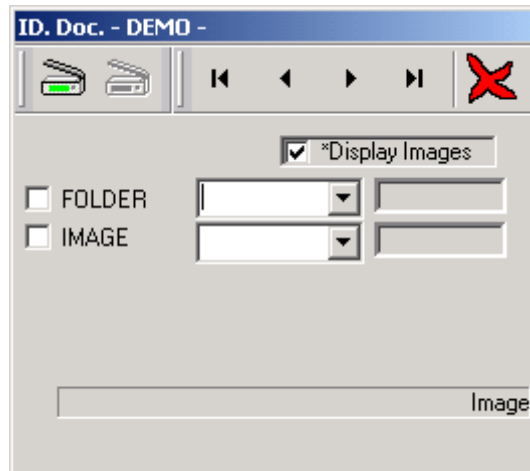
	Front / Back	Enables you to select whether to scan in simplex or duplex. The labels of front file and back file are specified in the job parameters
?		About All for Scan

3.2 Toolbar




3.2 Control Panel

Enables you to manage scanning/rescanning of files and complete batch.



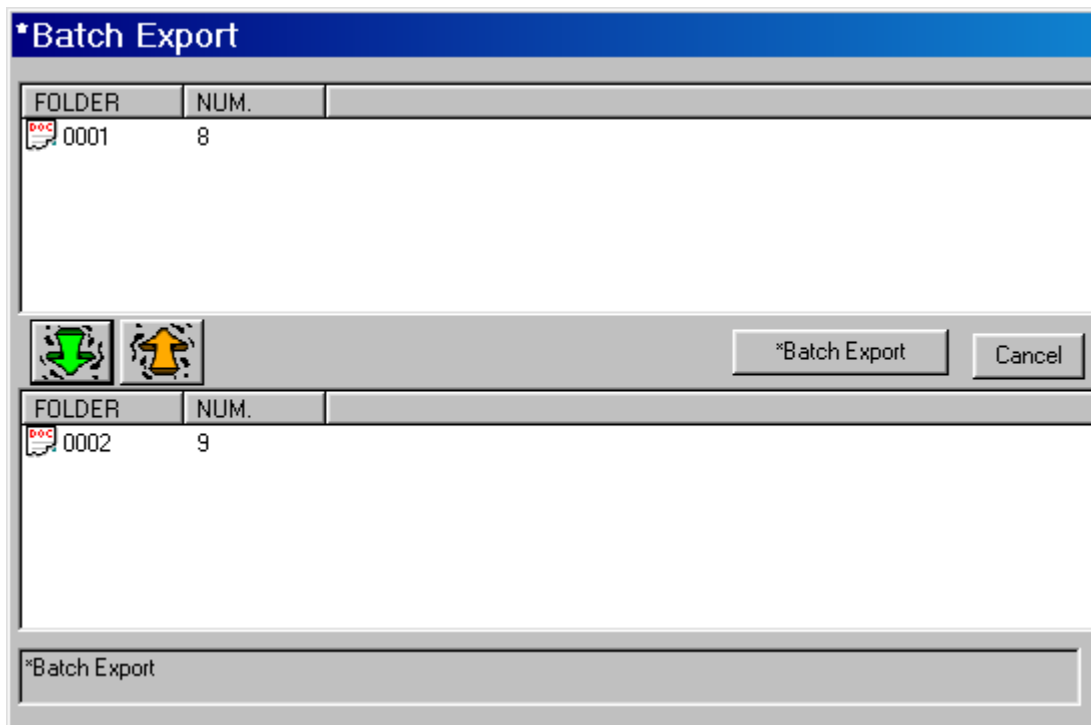
3.2.1 Buttons and Field Descriptions

Objects		Description
	Start Scanner	Starts scanning process
	Stop Scanner	Stops scanning process
	Navigate Images	Navigation Bar to view the images in the current batch

	Delete	Deletes the current file
<input checked="" type="checkbox"/> *Display Images	Preview	Checkbox to enable/disable display of images during scanning
<input type="checkbox"/> FOLDER 0001 0001 <input type="checkbox"/> IMAGE 0000001 0000001	Level Info	Allows up to 9 of levels, depending on how many levels (folders) you define into the job parameters. The check box makes you able to lock the field. In the first field you are able to type the value for this level. The second field shows the value during scanning process.

3.3 To send the Documents To...

This Dialog is used to export the scanned image batches to a network image server.



The first window displays the list of completed batches for the current Job profile.
The second Window display the batches selected for export.

To export batches you have to make these steps:

1. Select batches in the first window
2. Select the green arrow
3. Now the second window will display the batches selected for export
4. Clicking the "Export File" button will now export the selected batches.

The yellow arrow button will remove image files from the export batch list. The Cancel button will allow you to exit from this dialog.

4. Job Parameters profile

4.1 New Job Creation

You can create a new job profile with the following steps:

1. Press “new job profile” in the first window
2. Configure all parameters using the following dialog (see 4.2 Parameters)

After completing all the steps you have to reopen the program to load the new job.

4.2 Parameter

This window is used to enter all the parameters of each job, and you can open it from Modify>Job Profile.

*Job Profile

Job | Export | Bar Code Setup | Various | Level 1 | Level 2 | Level 3 | Level 4 | Level 5 | L | < | >

Jobs: DEMO

Scanner parameters File Name: Demo_Scan.ini

Job Profile File Name: Demo_Job.ini

*Output Disk/Folder: C:\TestScan\Img\

*Front File Name: fro | *Back File Name: bac

Level Numbers (1-9): 2 | *Automatic Level:

MultiTIFF:

OK | Cancel | Apply | Help

As you can see from this screenshot, the main job parameter panel is divided into several tabs.

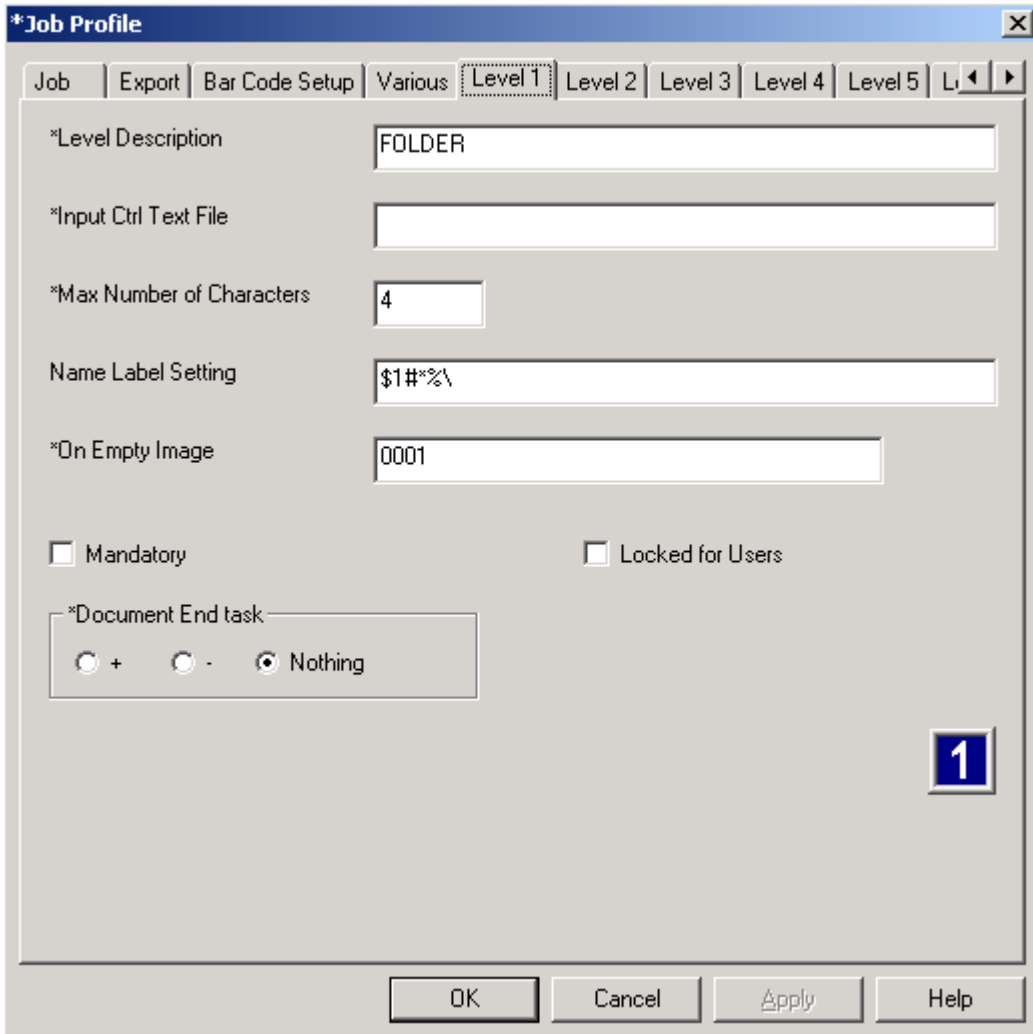
These tabs are:

1. Job – general information for this current job
2. Level X (max 9) – the subfolders of this job profile
3. Export – the parameters for images exported to a network image server.

4.2.1 JOB

Object	Description
Jobs	Alphanumeric field for job Name
Scanner parameters File Name	Alphanumeric field where you can type the scanner parameters file name; Pay Attention ! some Twain Interfaces are not able to read the stored parameters for the scanner
Job Profile File Name	Alphanumeric field for job parameters file name
Output/Disk Folder	Path in which will be stored the images during scanning
Front File Name	File Name Extension for front images
Back File Name	File Name Extension for back images
Level Numbers	Number of level/folders for this standard job. These levels will be used to build the path for the scanned documents.
Automatic Level	The number of level that will be incremented after each scanning (ignored for MultiTiff)
Multi Tiff	Creates Multi tiff file

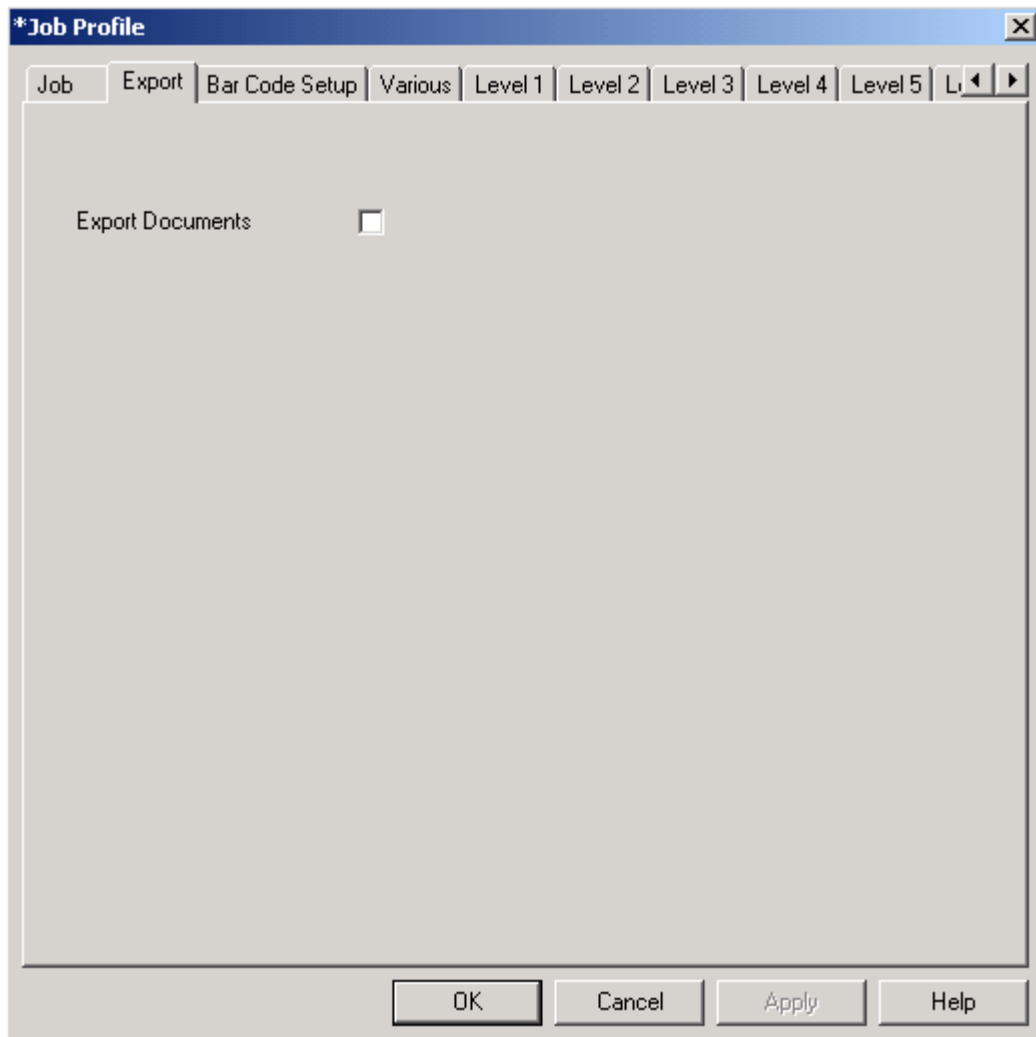
4.2.2 Level Tab



Object	Description
Level Description	Name of this level: For Example: You could receive some documents from a bank and you need to create a structure such as: Bank/Date/Branch/document.tif Here you will have 4 levels and the last will be the level (the image), which has an incrementing value.
Input Ctrl Text File	If you have a text file (with 0D0A) with all possible values for this level, you can use it to control what the scanner operator will type.
Max Num of Chars	Max Number of characters into level/folder label
Name Label Setting	Sets how the label of this level/folder will be used to build up the image file name:

	<ul style="list-style-type: none"> • \$"y"#x% <p>will add to the image file name the character number x from level number y</p> <p>if y will be "F" AllForScanT will examine the extension of front or back document.</p> <ul style="list-style-type: none"> • if x = "*" AllForScanT will add all characters of this level. • \$-z% come back on the file name for z characters position
On Empty Image	Kind of label the program has to insert if the scanner operator doesn't type anything.
Mandatory	Value is mandatory (the scanner operator is obliged to type something).
Locked for Users	Disables Scan operator from changing level values. Used when AllForScan is started from a separate application e.g. DCPA.
Document End Task	Sets the automatic incrementing

4.2.3 Export Tab



Object	Description
Export Documents	Activates the export parameter with this checkbox

Appendix

All for scan could be starter with the following parameters:

APP= "Profile"

Profile Name that you need to start.

LEVELS=X,Y,....

Where X is the value of level 1, Y is the value for level 2 and so on. If you leave the level without any value, All for Scan will take the default value from job profile.

BC= 1 o 0

This parameter make you able to define to activate or deactivate the barcode recognition.

"0" not active

"1" active

If you will not specify this parameter, Program will take the default values from job Profile.

BC_EXPORT = "File"

File Name with complete path for barcode recognition results.

If you will not specify this parameter, Program will take the default values from job Profile.

BC_TYPE=X

X is the Barcode type codes.

1= Barcode 3 of 9

2= Barcode 2 of 5

4= Barcode 128

8= Barcode Codabar

16= Barcode UPC_A

32= Barcode EAN 13

64= Barcode 93

128= Barcode 2 of 5 IATA

256= Barcode 93 Type 2

512= Barcode3 of 9 NUDE

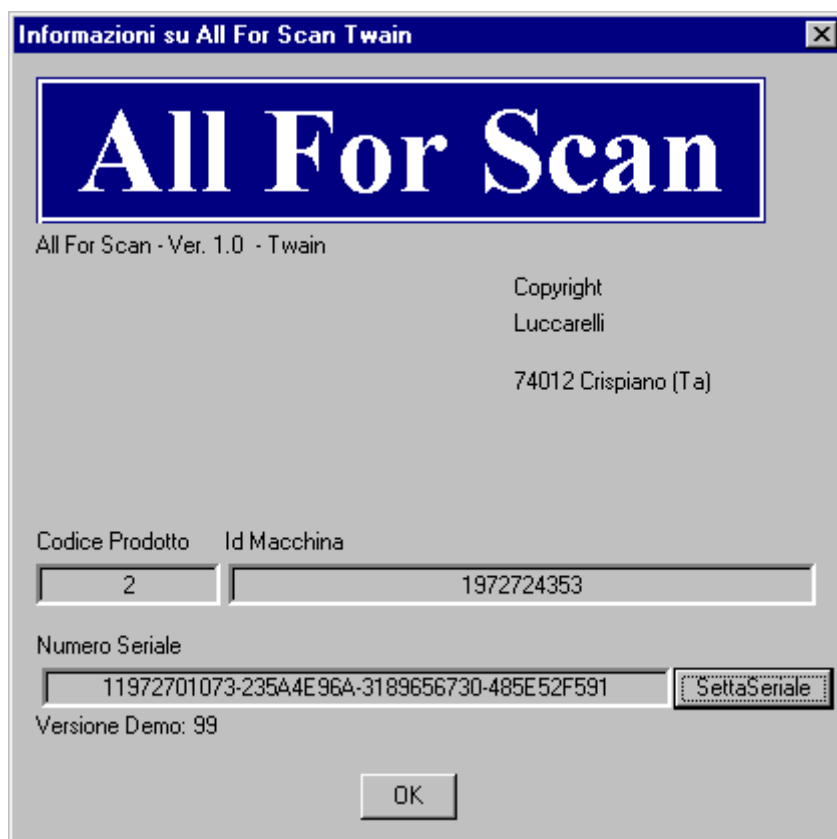
1024= Barcode EAN 8

You can insert more then one with the expression "OR"

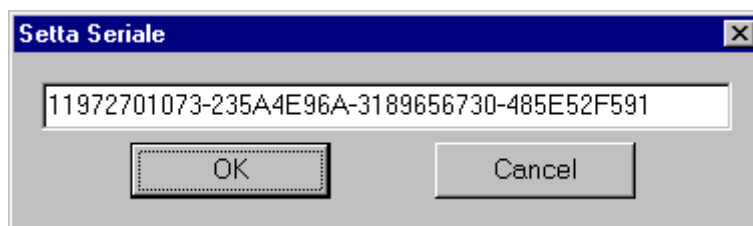
Licensing All for Scan Twain

Please follow these steps to insert the license key:

1. Open AllForScanT's info window



2. Select the button "Insert Serial Number"
3. Type the license key



If the license key is entered incorrectly, you will get the error message Demo XXX Version, and AllForScanT will be not able to scan documents.

Please ask us for a license key by faxing us at (+39.099.8115092) or email info@luccarelli.it. You need to supply us with the following data:

- Complete Customer Name and address

- *Product Code/Codice Prodotto*
- *Pc Identification Number/Id Macchina*
- *Fax Number*
- *Mail Address*
- *Contact Name*

If you have question or comments please contact us at:

Luccarelli Srl
Via F.Bandiera 1
I-74012 Crispiano (TA)
Italy
Telefono: +39 099 61 67 10
Telefax: +39 099 811 50 92
Email: info@luccarelli.it

<http://www.luccarelli.it>

All For ScanT

Copyright LUCCARELLI SNC

Distributed from